

HSLAB Access Control Installation Guide

Windows Server 2003 SP1, Windows Server 2003 Enterprise Edition SP1, Windows Server 2003 Datacenter Edition SP1, Windows Server 2003 Web Edition SP1, Windows Server 2008, Windows Server 2008 R2

Windows Small Business Server 2003 Standard Edition SP1, Windows Small Business Server 2003 Premium Edition SP1

Windows XP Professional SP2, Windows XP Home Edition SP2, Windows XP Tablet Edition SP2, Windows XP Media Edition SP2

Windows 2000 Professional Edition SP4, Windows 2000 Server Edition SP4, Windows 2000 Advanced Edition SP4, Windows 2000, Datacenter Server Edition SP4, Virtual Server

Windows Vista Home Basic, Windows Vista Home Premium, Windows Vista Business, Windows Vista Enterprise, Windows Vista Ultimate, Windows 7
(XP/Vista is supported, but not recommended). CPU Pentium III Compatible or higher. Minimum: 500 MHz, Recommended: 1 GHz or higher. See [editions matrix](#) for details.

32-bit and 64-bit

System memory:

Minimum: 192 MB, Recommended: 512 MB or higher

Disk space:

250 MB free space

Screen resolution:

800 x 600 (with any color depth), 1024 x 768 x 16-bit color recommended.

Prerequisite software:

NOTE: All or the majority of these components most likely already installed on your system by the Windows Update. If some components are missing, Access Control installation package will download and install the required software for you.

Microsoft .NET Framework v2, download from the [.NET Framework 2.0 Download Center](#).

Microsoft Internet Explorer 6.0 Service Pack 1 (SP1) or later (prerequisite for .NET Framework)

[Windows Installer 3.1](#)

[Microsoft Data Access Components \(MDAC\) 2.8](#)

[Windows 2000 Service Pack 4](#)

[Windows XP Service Pack 2](#)

[Windows Server 2003 Service Pack 1](#)

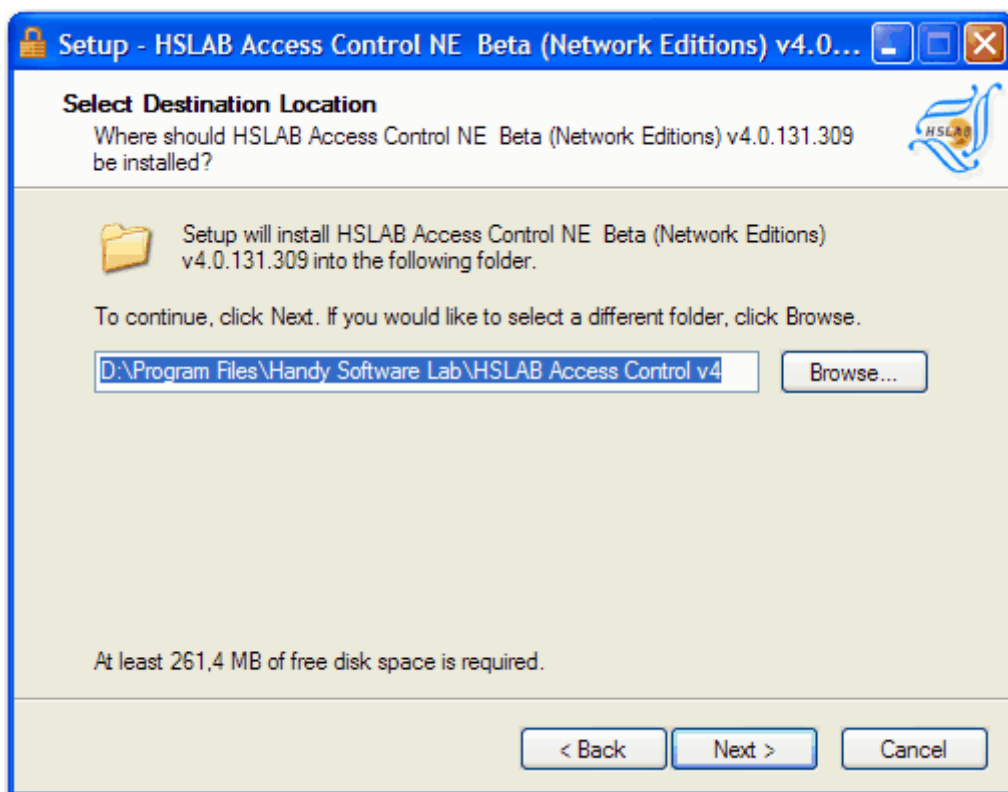
Network editions

The Network editions of the HSLAB Access Control are intended for user's activity monitoring in local network.

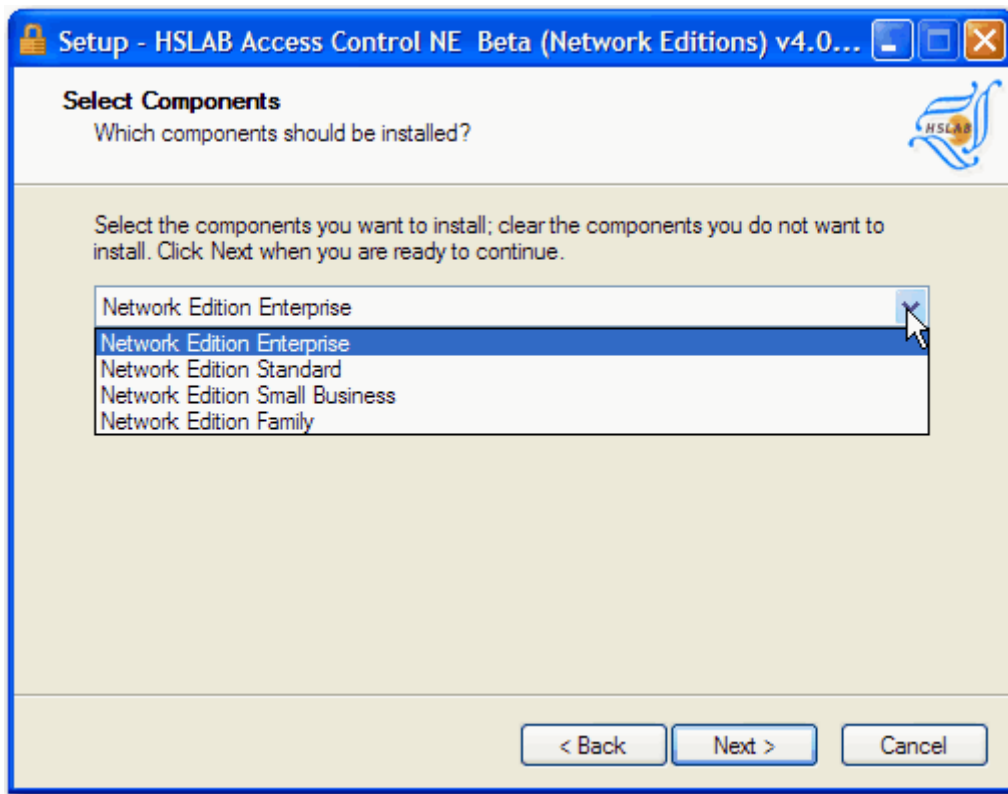
Start the installation process double clicking on hslab-access-control-4-ne.exe, where "ne" is an edition marker. Installation process is a simple and traditional.



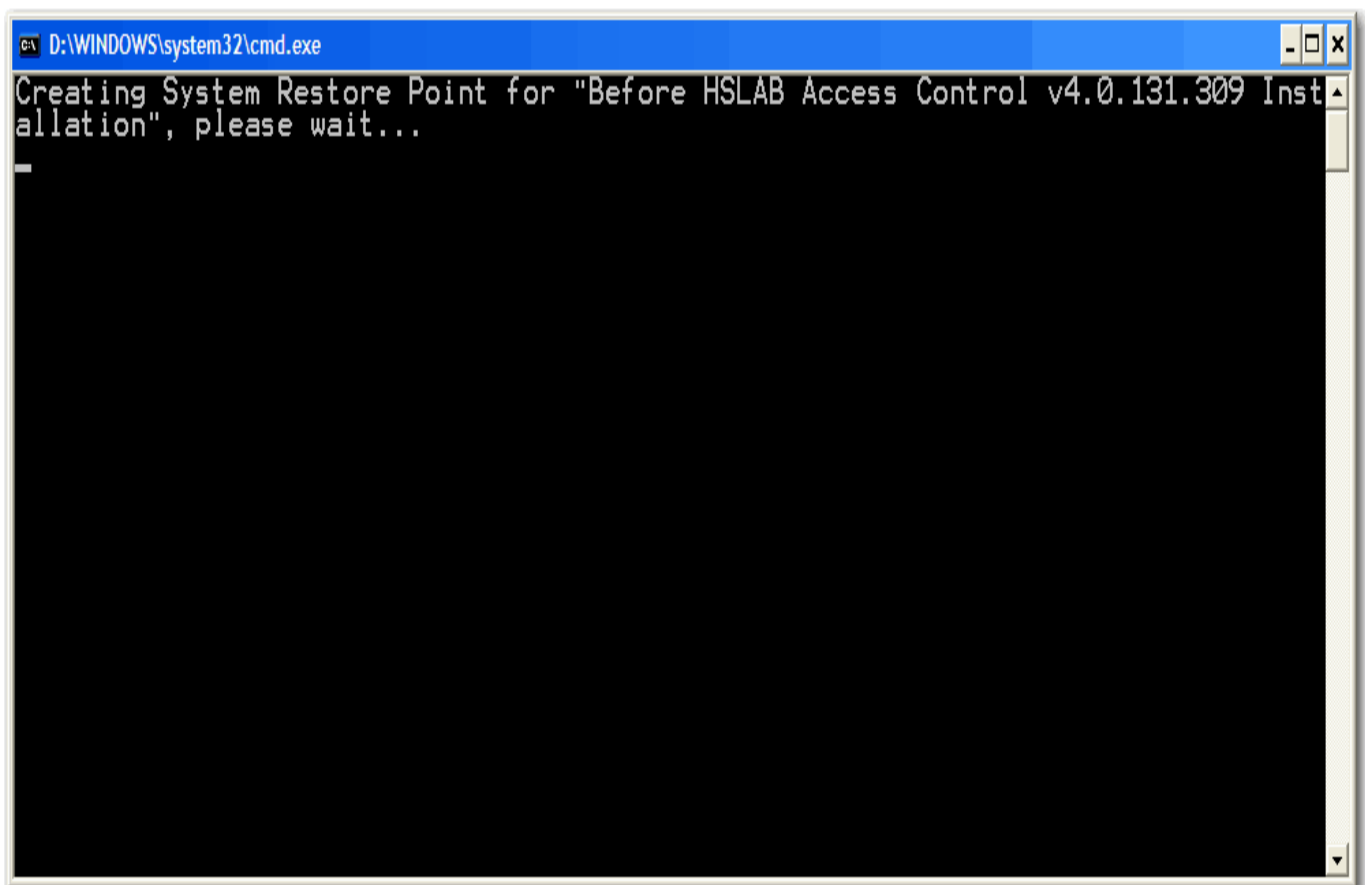
You're should set installation directory and product installation type.



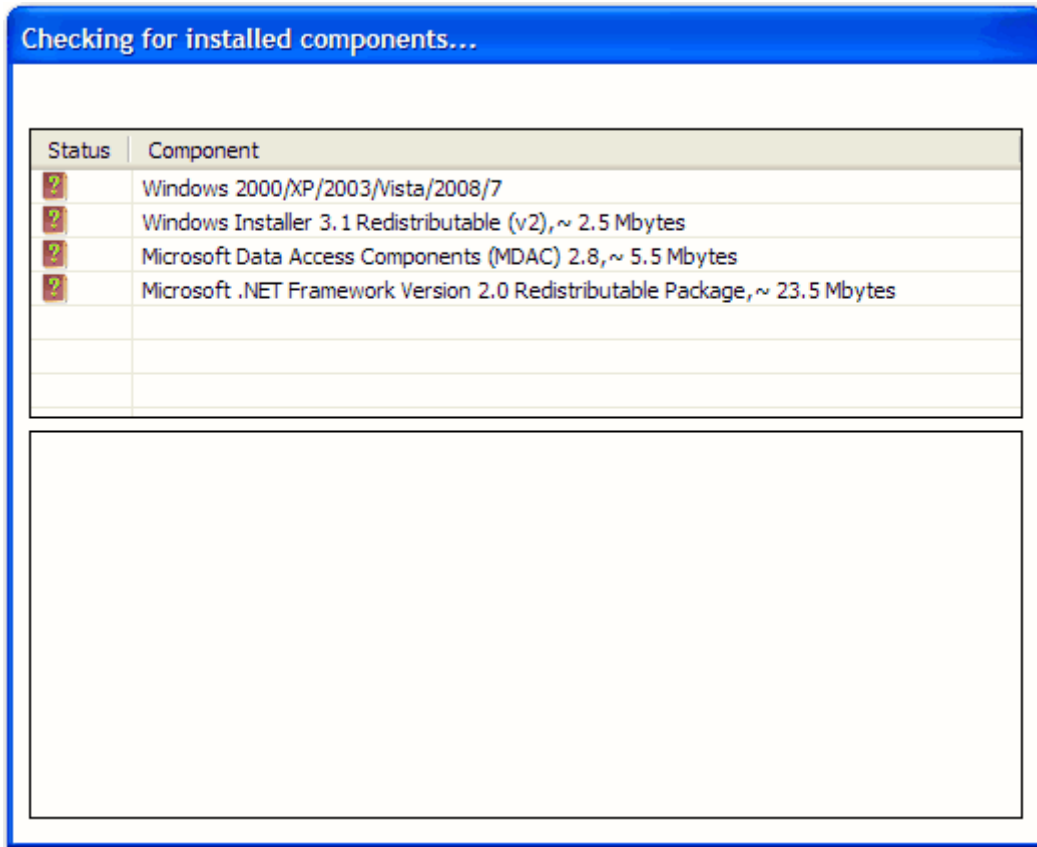
NOTE: If you're installing this software on cluster system, you should place Access Control directory on your cluster shared drive.



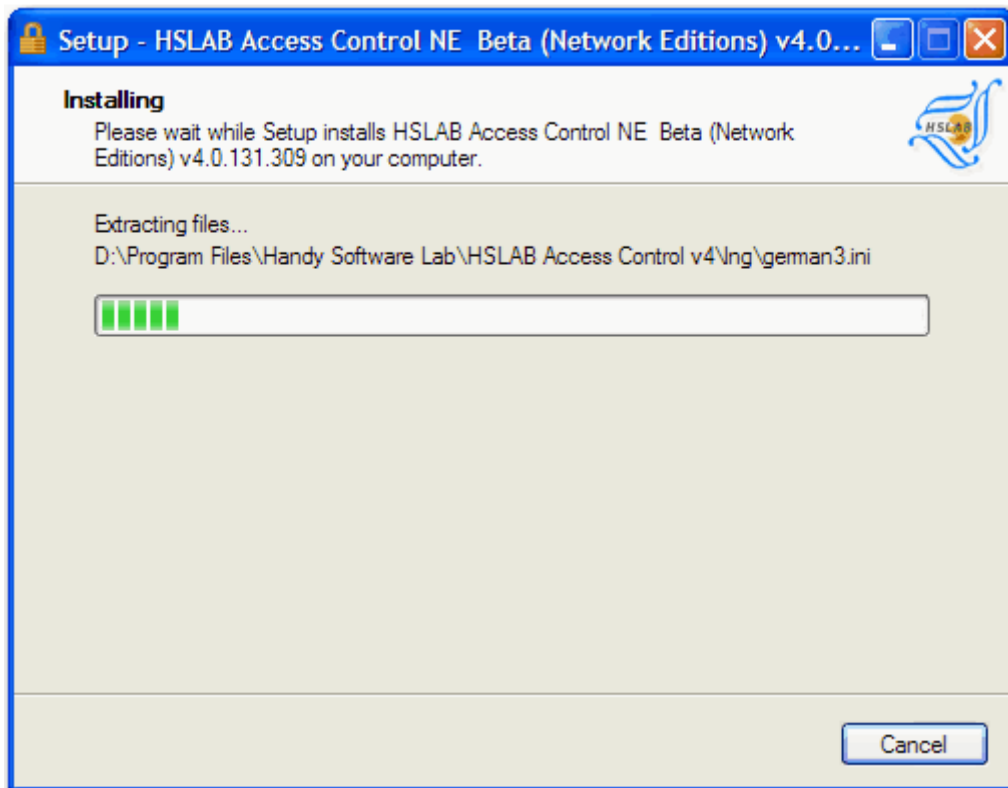
Before actual installation the Access Control Install wizard will create the system restore point.



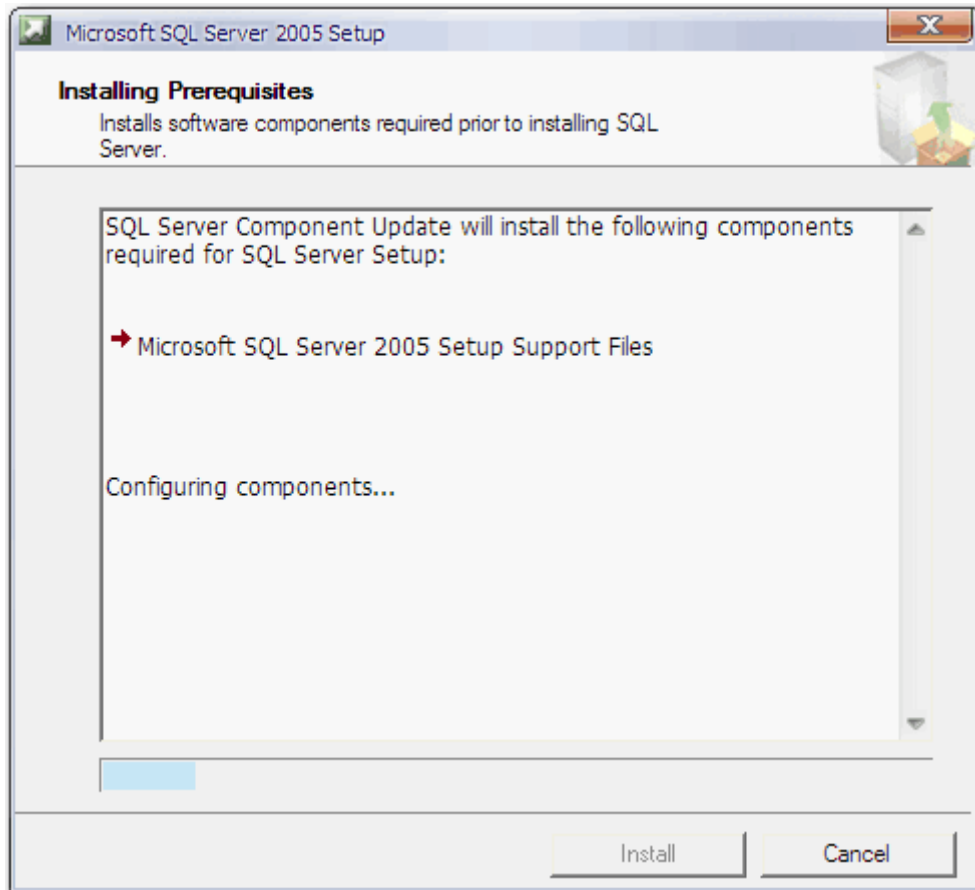
The Access Control Install wizard will check your system for [Prerequisite software](#):



And will try to install missing components automatically. If some components are failed to install, please try to install missing components manually.



The Access Control software using Microsoft SQL server 2005 express edition. This component will be installed automatically without user intervention.



The Access Control installation agents should be able communicate with the Access Control server component (from the local network) please enable set of firewall rules. These rules will be created automatically by the install wizard.

Done. The Access Control software is installed and ready to use.

Configuring network editions

Note: This chapter is not applicable for terminal server editions and for personal edition.

To start monitoring on remote computers you should install agents. You should install agent on each computer which you want to be monitored.

HSLAB Access Control NEE v 4.0.131.309 Beta

File View **Actions** Audit Options Restrictions Settings Help and Support

Add computer (Install agent) Remove computer (Uninstall agent) Update agent for selected computers Update agent for all listed computers Refresh clients

Agents

Active agents

Total: Show all licensed agents

Computer Name	User Name	Domain	Since last event reported	Computer uptime	User session time	Computer CPU Usage, %	Agent CPU Usage, %
H1	olegvg	HSLAB	16 sec	03 h, 41 min, 04 se	03 h, 35 min, 15 se	76	12
H3	bella	HSLAB	14 h, 45 min, 53 sec	03 h, 12 min, 49 se	02 h, 06 min, 41 se	20	2

Online Offline Screensave running High activity Low activity Inactive Unlicensed

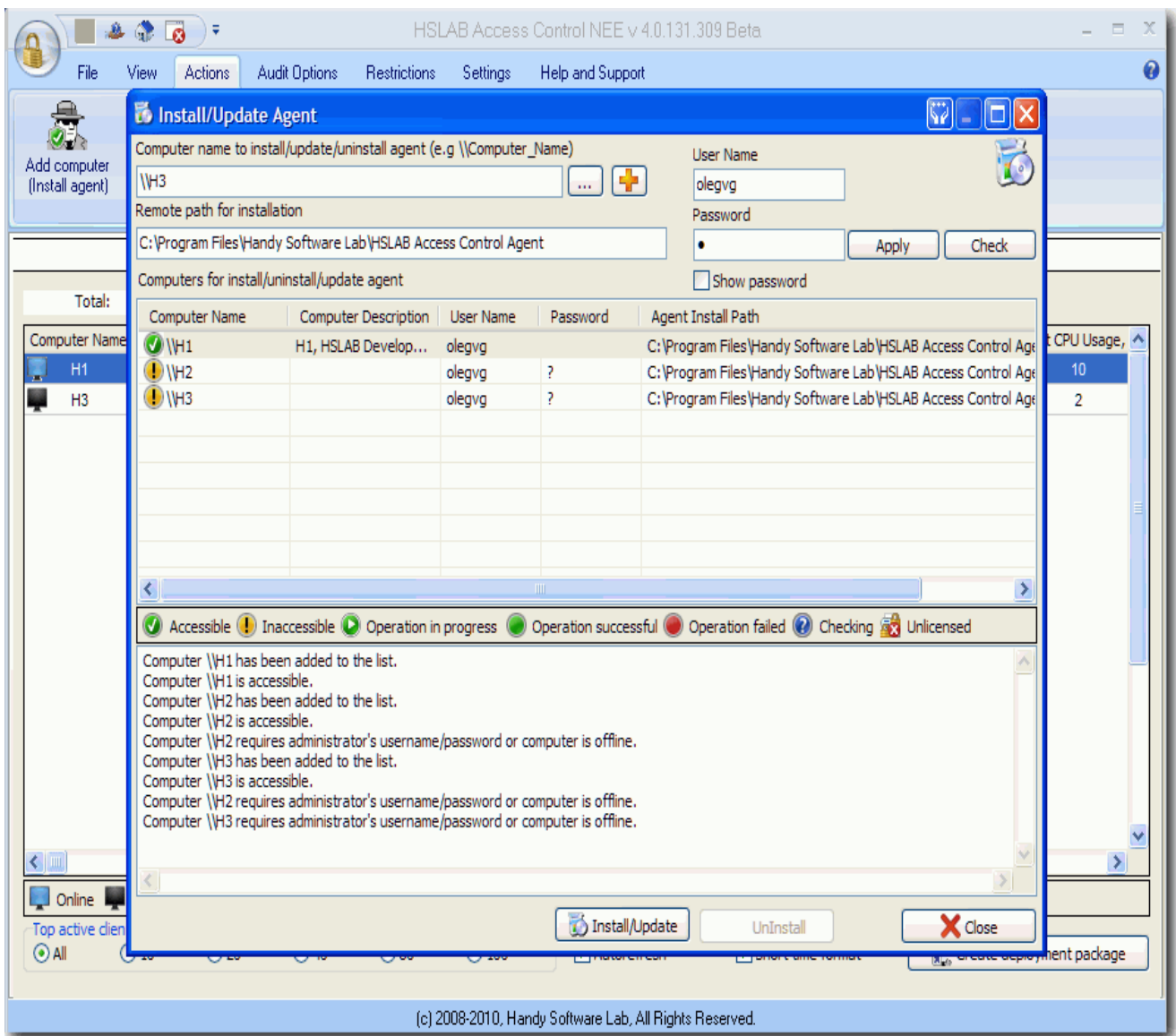
Top active clients

All 10 20 40 80 100

Autorefresh Short time format

(c) 2008-2010, Handy Software Lab, All Rights Reserved.

Please click "Add computer (Install agent)" button.

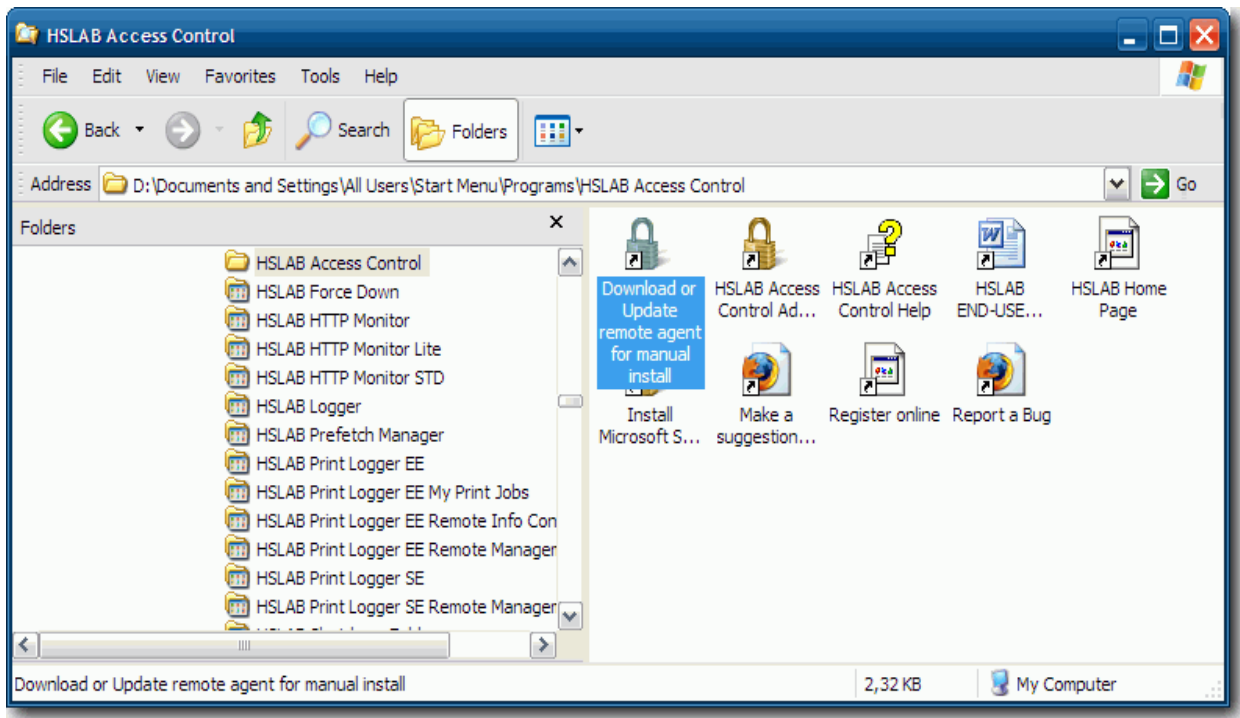


You can install agents on many computers at once. Some computers may not be accessible from your current user account. You should provide user name and password for an account with Administrator's rights for each inaccessible computer. Press "Apply" and "Check" to verify new account settings. If the status for computers changes to "Accessible", you can install agents on these computers.

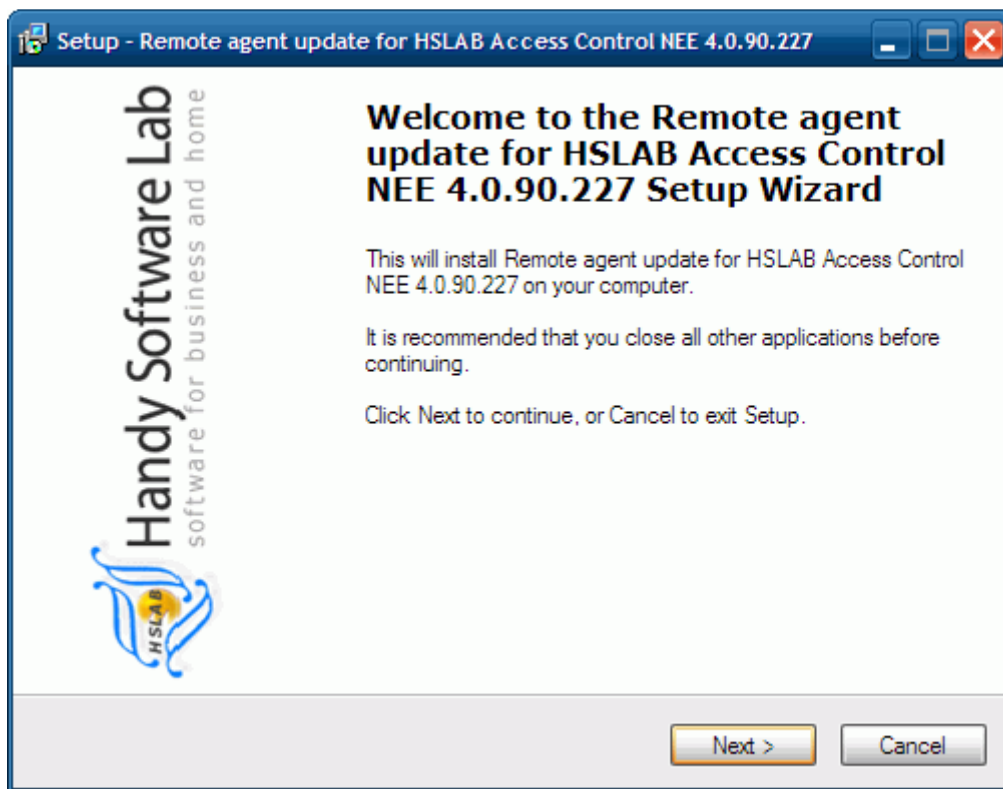
Manual Agent Deployment

Note: This chapter is not applicable for terminal server editions and for personal edition.

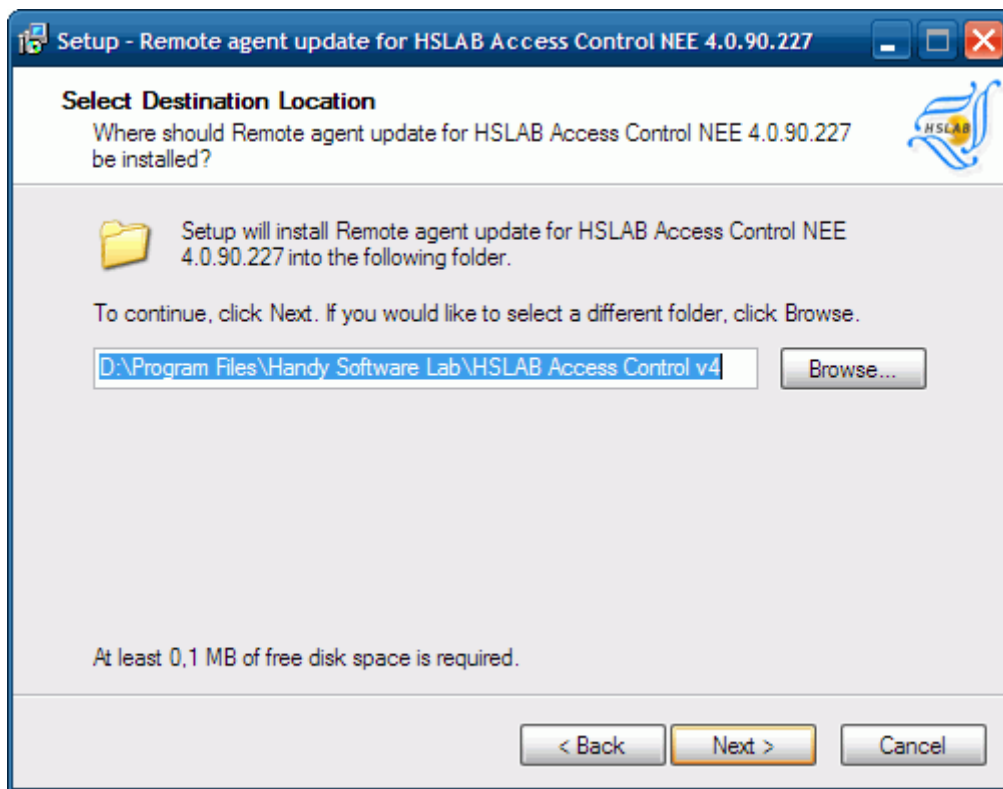
First of all, you should download the agent installation package. If you have downloaded this package during the Access Control installation, you do not have to do it again. You can skip this step.



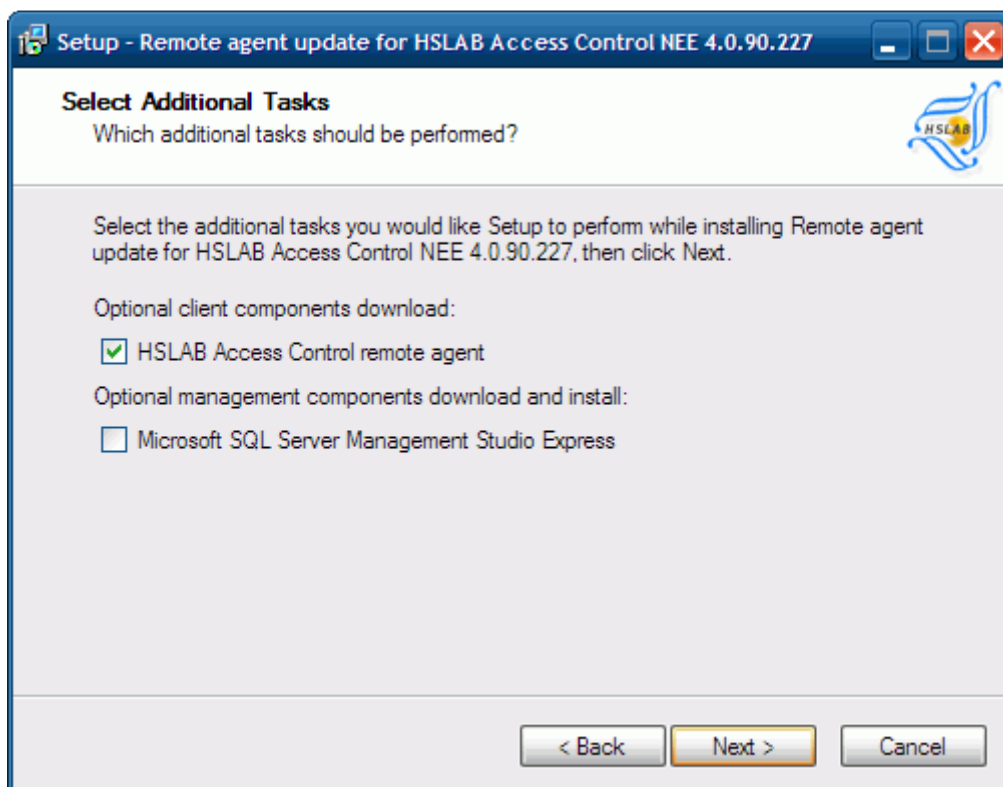
Double click on "Download or Update remote agent for manual install" icon.



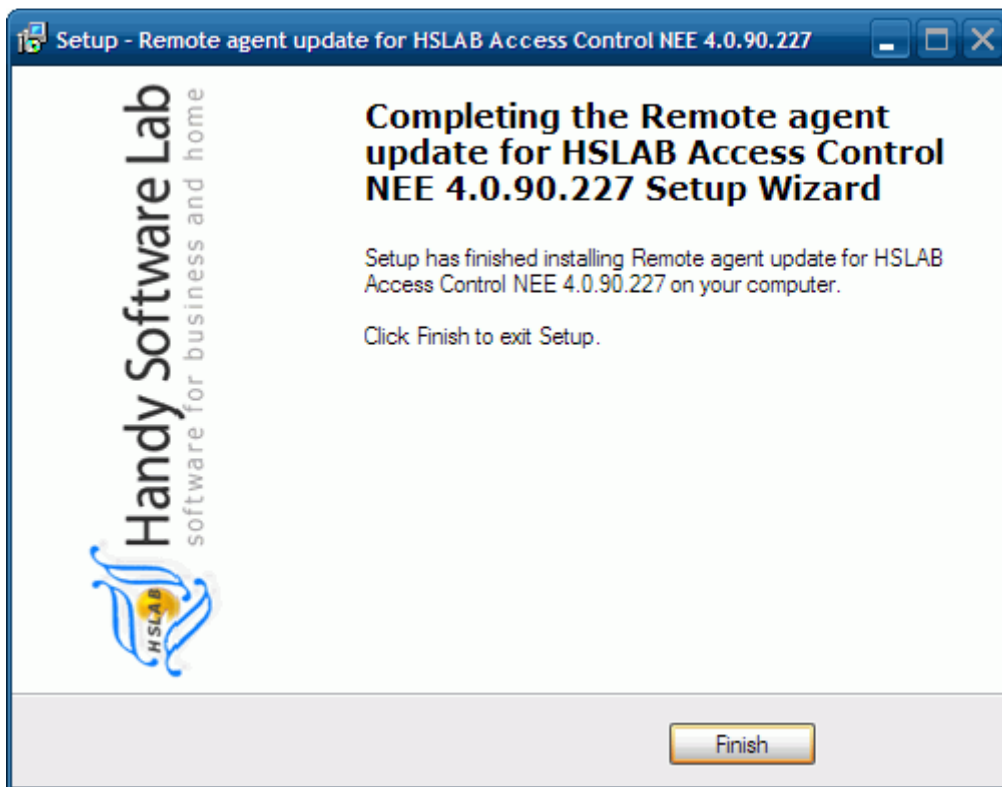
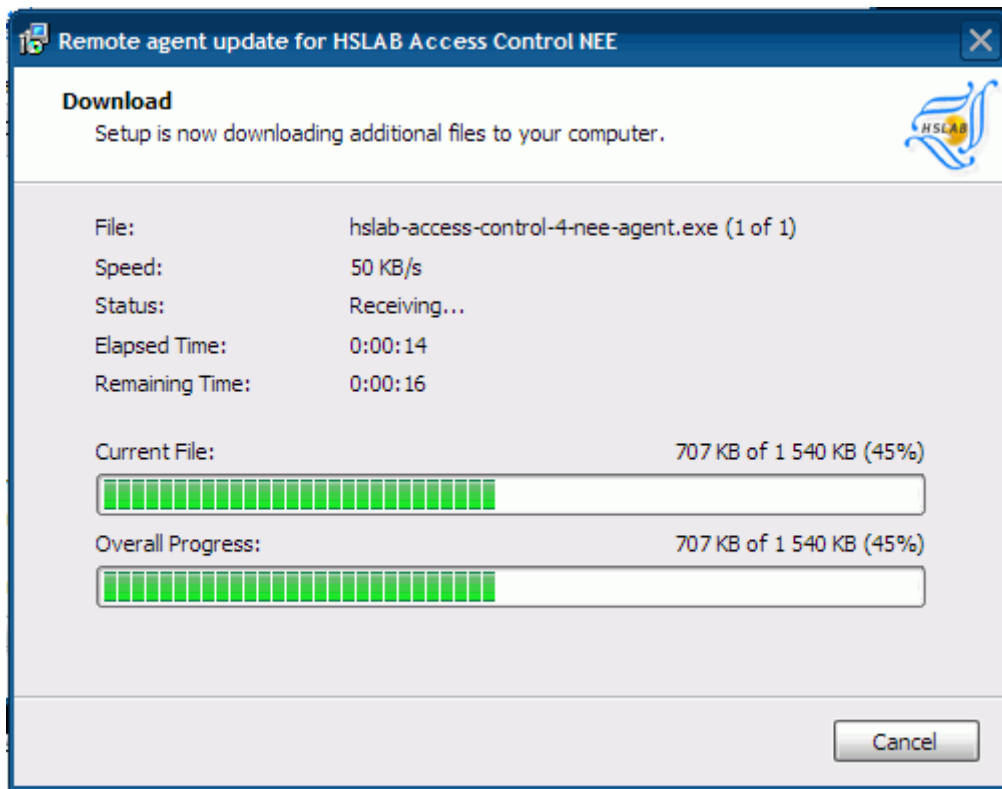
Click "Next" button to select destination location.



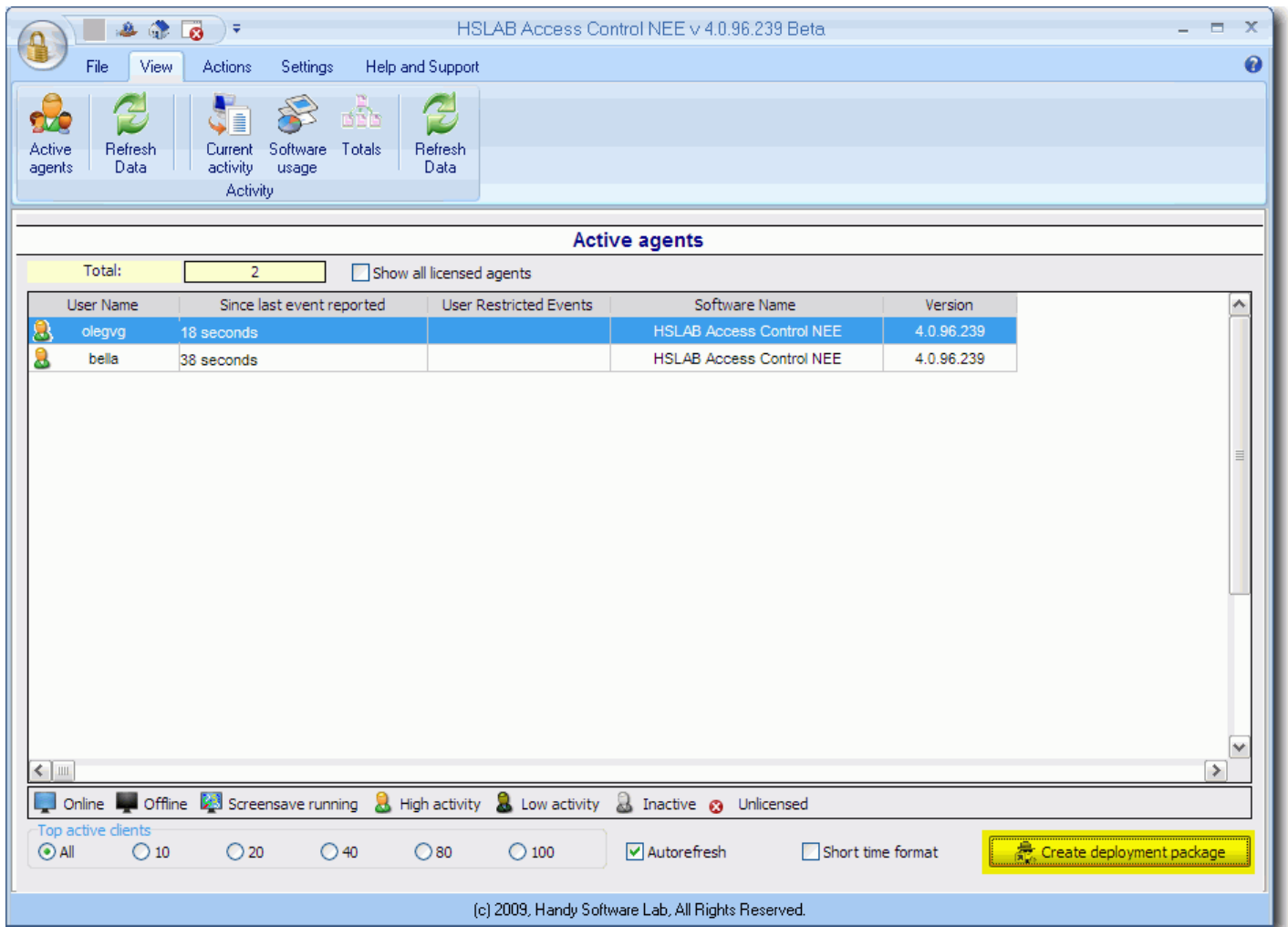
Please, do not change a directory for loading a package if in it there is no necessity.



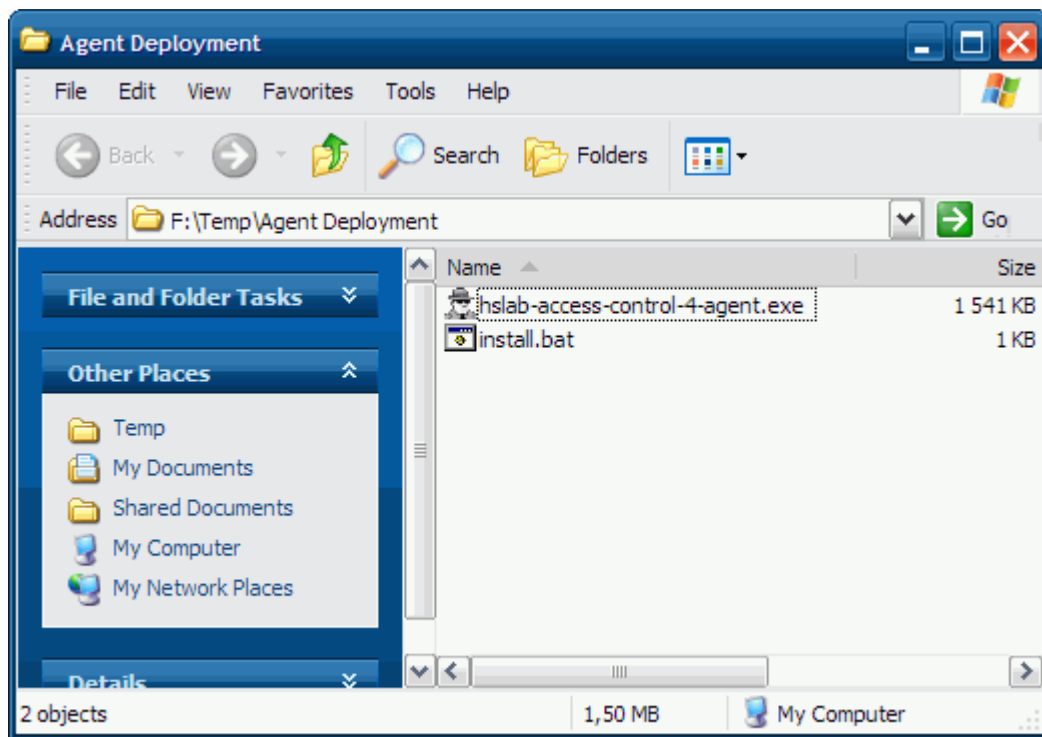
Click "Next" button to start download.



ATTENTION: please be convinced, that the version of your software coincides or more versions of an agent installation package. If the version of your software is less - please update your software. Otherwise stable work of the software is not guaranteed.



Now you can start the HSLAB Access Control Administrator to create installation script for the package. Press the "Create deployment package" button.



Silent installation:

```
agent-install-package-name /SILENT SERVER\ACCESSCONTROL 0
```

Replace "agent-install-package-name" with the actual package name, hslab-access-control-4-nee-agent.exe or hslab-access-control-4-nes-agent.exe

Replace "SERVER" parameter with the server name, where server part of the software is installed.

Example:

```
hslab-access-control-4-nes-agent.exe /SILENT MyServer\ACCESSCONTROL 0
```

See also:

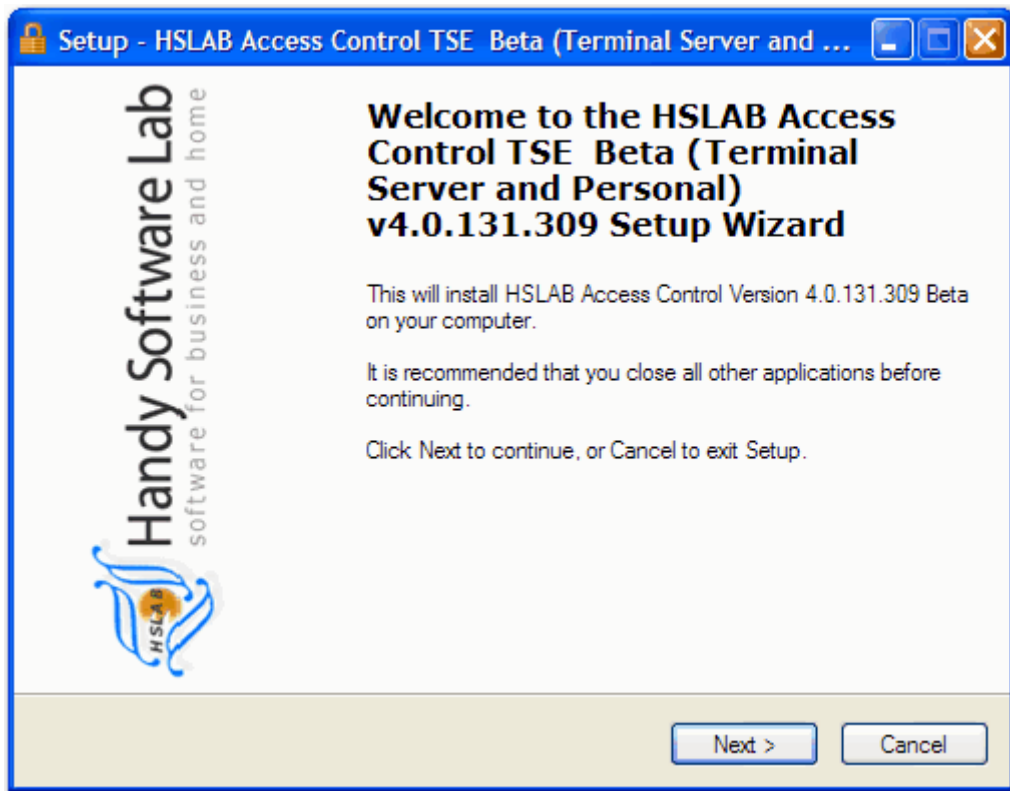
[Create deployment package](#)

[Register Online](#)

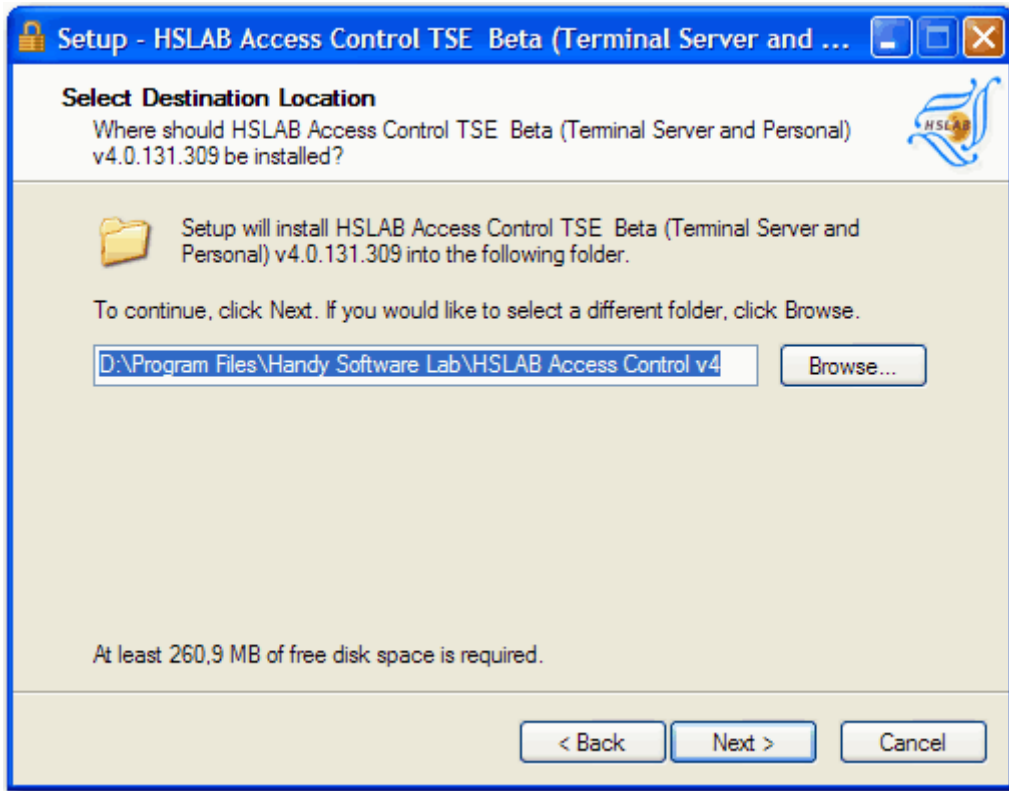
Terminal server editions

The Terminal server editions of the HSLAB Access Control is intended for user's activity monitoring on the terminal server or on single computer.

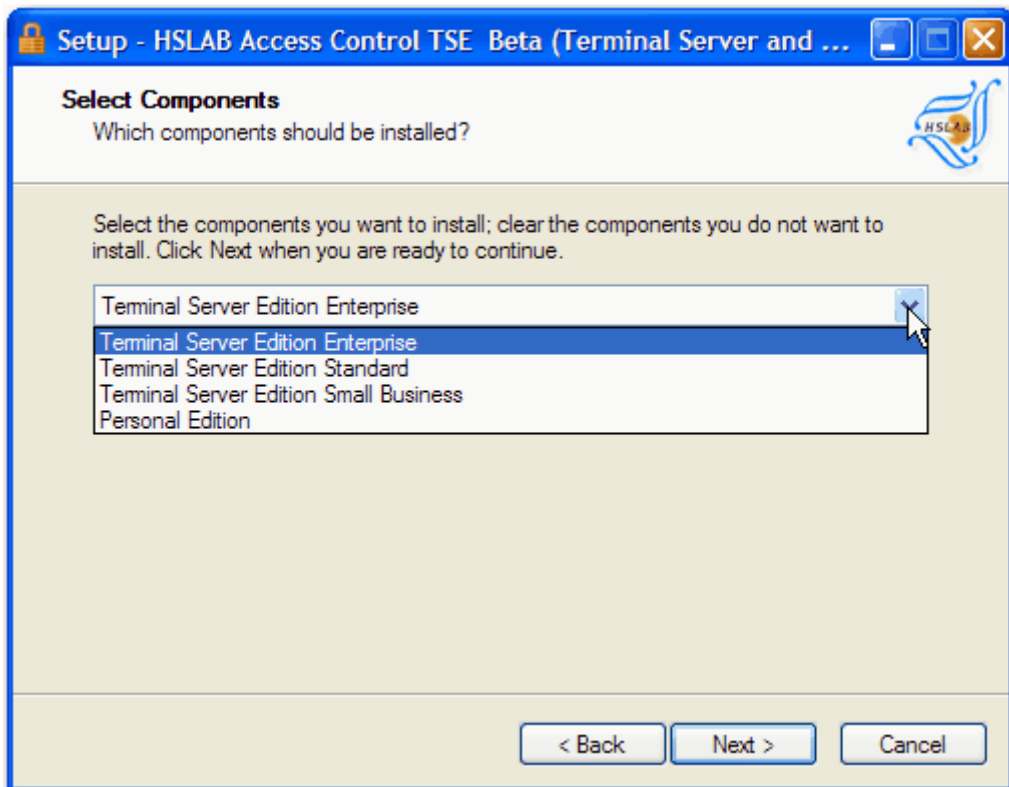
Start the installation process double clicking on hslab-access-control-4-ts.exe, where "ts" is an edition marker. Installation process is a simple and traditional.



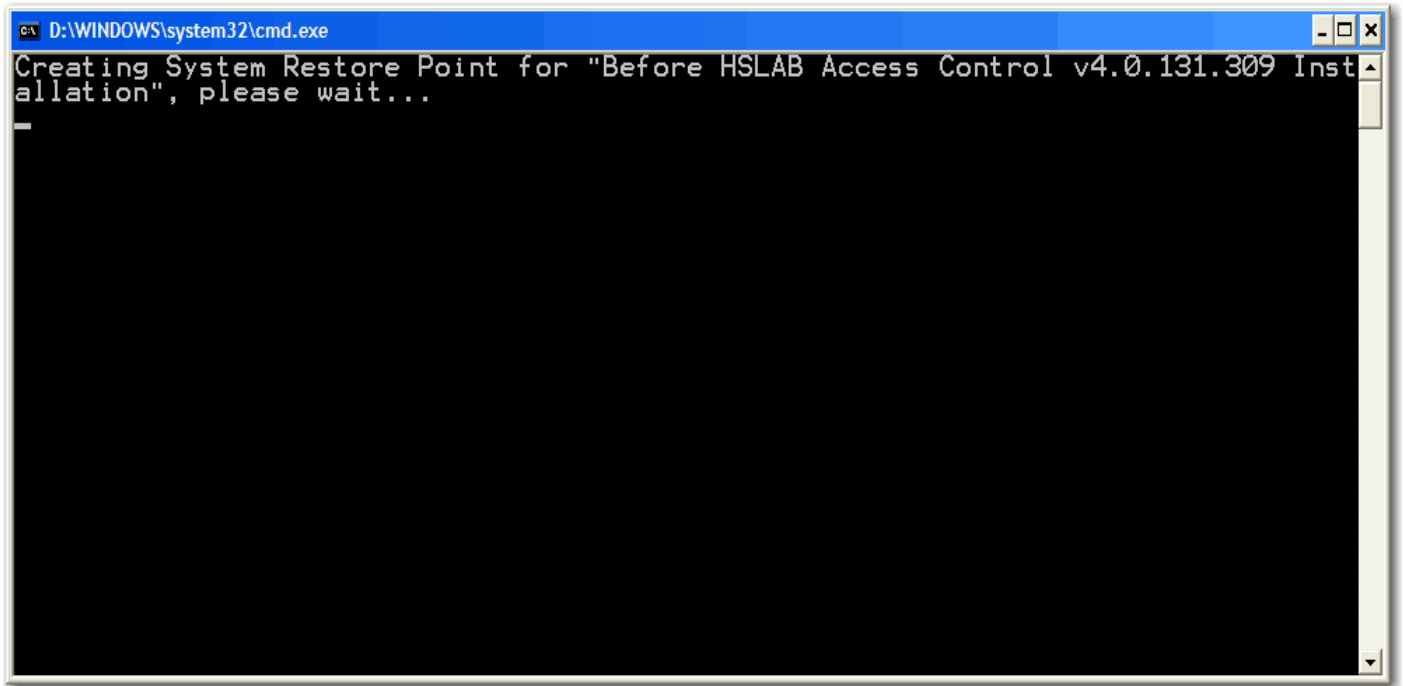
You're should set installation directory and product installation type.



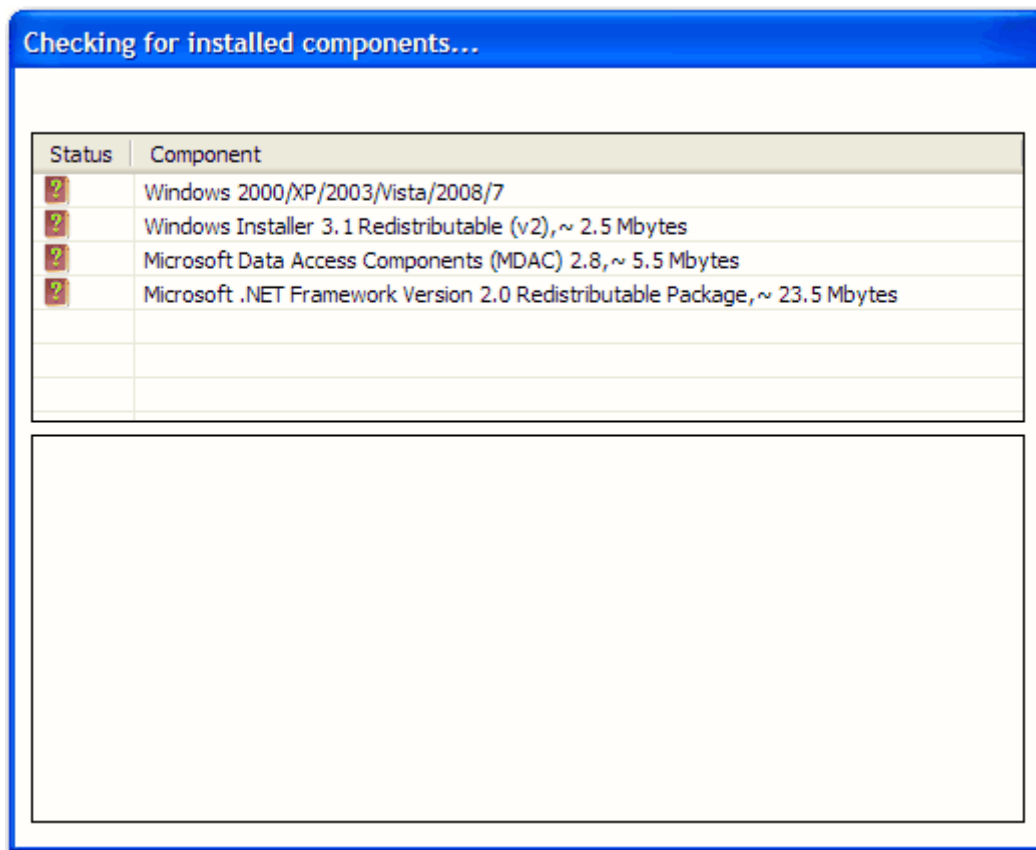
NOTE: If you're installing this software on cluster system, you should place Access Control directory on your cluster shared drive.



Before actual installation the Access Control Install wizard will create the system restore point.

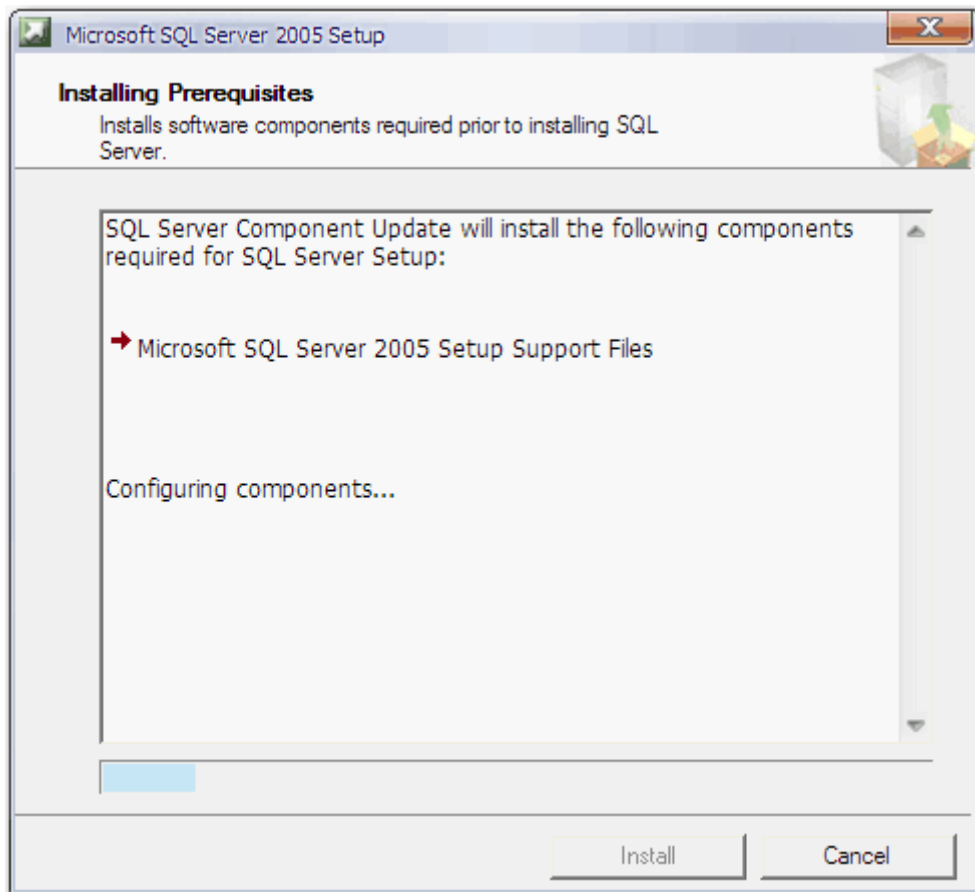


The Access Control Install wizard will check your system for [Prerequisite software](#):



And will try to install missing components automatically. If some components are failed to install, please try to install missing components manually.

The Access Control software using Microsoft SQL server 2005 express edition. This component will be installed automatically without user intervention.



Done. The Access Control software is installed, started and ready to use.

Now you can start configuring [audit options](#).